

PEPIN COUNTY EOP

ANNEX K Fire and Rescue

Developed: May 1993

**Updated: June 1994
May 1995
May 1996
May 1997
June 1998
June 1999
June 2000**

**Complete plan revision:
January 2002**

**Updated: February 2005
September, 2007
Revised as per RO 10/16/07
August 2010**

ANNEX K (FIRE AND RESCUE)

I. PURPOSE

This annex describes how the county will assist the municipality to provide response to hazardous materials events, wildland fires and fire and rescue service requests.

II. CONCEPT OF OPERATIONS

During a disaster, the municipality will have the primary responsibility of providing hazardous materials, fire and search and rescue services although it may be called upon by the county to perform other duties (e.g., evacuation, warning, decontamination.) During wildland fires, the Wisconsin Department of Natural Resources will assume authority and will coordinate with local fire departments (**See Attachment 5**). The county will assist with the coordination of personnel and resources needed.

During the recovery phase, all agencies are expected to support continuing operations with equipment and staff.

III. RESPONSIBILITIES AND TASKS

A. Emergency Management Director

Response

1. Mobilize and coordinate county resources to assist local fire departments.
2. Assist with the coordination of mutual aid agencies.
3. Provide pertinent information to the on-scene personnel.
4. Coordinate county resources in support of wildland fire suppression.
5. Notify contracted clean-up company for remediation services of hazardous materials incidents as appropriate.

Recovery

1. Assist the local fire departments with documenting the incident and billing for the reimbursement of costs.

ANNEX K (FIRE AND RESCUE)

B. County Level B Hazardous Materials Team

Pepin County does not have a Level B Hazardous Materials Team. Assistance for hazardous materials incidents beyond the level of training of local departments can be obtained from the West Central Wisconsin Hazardous Response Team out of Eau Claire/Chippewa Falls.

C. Municipal Fire Department

Response

1. Initiate the Incident Command System.
2. Contain and suppress fires.
3. Provide search and rescue services.
4. Support the emergency medical services operations.
5. Assist with decontamination operations as requested by the Hazardous Materials Team.
6. Assist with the warning, evacuation and in-place sheltering operations as requested.
7. Coordinate the response of mutual aid agencies and request assistance from state agencies.
8. Contact the Regional Level A Team or County Level B Team for help as needed.
9. Coordinate with the EOC for the release of public information.
10. Send a representative to the County EOC as necessary.

ANNEX K (FIRE AND RESCUE)

Recovery

1. Ensure documentation of resources expended and recovery costs.
2. Assist with the damage assessment process as requested.

Resources

1. See **Attachment 3** for specialized resources and **Attachment 4** for Organizational ICS.

ANNEX K (FIRE AND RESCUE)
Attachment 1 (Agency Approval Signature Sheet)

ANNEX K (FIRE AND RESCUE)
Attachment 1 (Agency Approval Signature Sheet)

The undersigned have hereby reviewed and approved Annex K of the County
Emergency Operations Plan.



County Board Chairperson

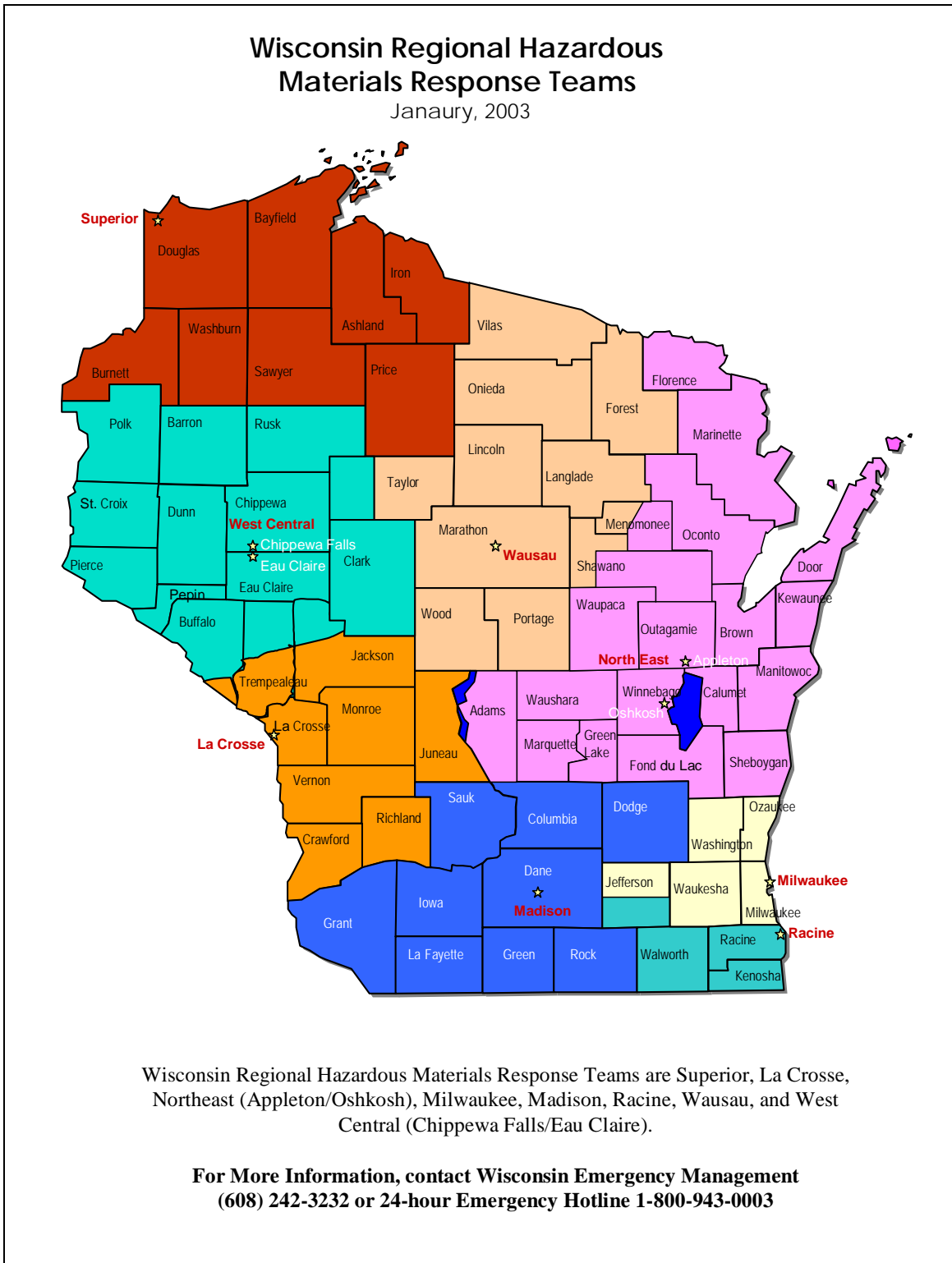
7-28-2010
Date



Emergency Management Director

7-28-2010
Date

ANNEX K (FIRE AND RESCUE)
Attachment 2 (Regional Level A Teams)



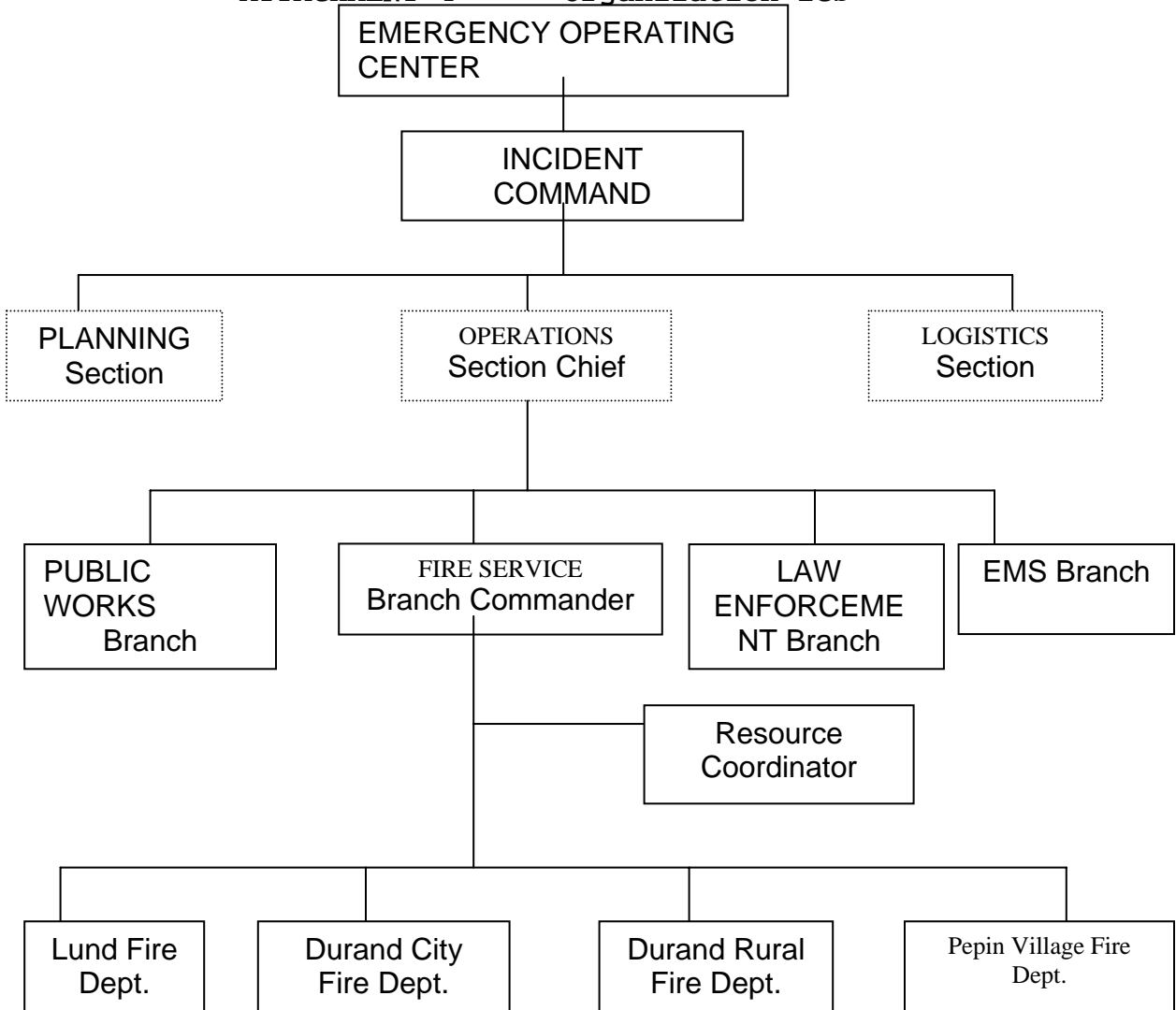
ANNEX K (FIRE AND RESCUE)

ATTACHMENT 3 Specialized Resources

Herb Pelke Plumbing and Well Drilling Hi-Ho Backhoe Backhoe	715-672-5266
Rock Road Trucking Dump Trucks (6)	715-672-5159
Unser Excavating	715-672-4350 FAX: 715-672-4940
H & R Construction	715-285-5879 CELL: 715-495-6819
Reglin & Hesch Construction (Cochrane, WI)	608-626-2261 608-685-3797

ANNEX K (FIRE AND RESCUE)

ATTACHMENT 4 - Organization ICS



Command



Incident command system module that may or may not be activated.

ANNEX K (FIRE AND RESCUE)

ATTACHMENT 5

Fire Departments

All fire departments responding in Pepin County are volunteer.

1. Durand Fire Department
2. Lund Fire Department
3. V/Pepin Fire Department
4. Mondovi Fire Department
5. Rock Creek Fire Department

ANNEX K (FIRE AND RESCUE)

ATTACHMENT 5 Cooperative Areas

